

The Pittsburgh Playwrights Theatre Company proudly presents

THE RAY WERNER PLAY FESTIVAL



Festival Coordinator
MONTEZE FREELAND

Artistic Director
MARK CLAYTON SOUTHERS

**NOV.8-DEC.2
2018**

WELCOME



What has helped our company survive artistically over the years has been our ability to tap into our treasure trove of well-versed Pittsburgh playwrights.

Ray Werner is one such playwright. August Wilson often said “Write what you know,” and boy does Ray sure know how to tap into his rich life experiences. His plays are sincere, funny and creative; his ability to tap into his imagination mixed with real-life experiences to craft great stories is hard to come by. It’s the recipe for great playwriting.

We’re so lucky to have this Pittsburgh Icon amongst our ranks.

Mark Clayton Southers
Founder & Producing Artistic Director

A NOTE FROM THE PLAYWRIGHT

Humbled. Astonished. Grateful. Where do I begin? When Pittsburgh Playwrights surprised me with their idea to celebrate their 15th anniversary with a festival of my plays, it took the breath out of me. Why me? Why Ray? I can name several other Pittsburgh playwrights more worthy. But, since I’m considerably older than any of them, I decided to accept.

In a recent interview, I was asked how long it takes me to write a play. I said almost 70 years, since it was about then I really started writing plays. Add another 10 years for original sin, and here we are.

We learn from each other, every day. Three playwrights I am indebted to are Rob Zellers, who first agreed, without hesitation, to read one of my plays; Tammy Ryan, whose workshops pulled some good ideas out of me and gave me the confidence to follow them; and Mark Clayton Southers, whose example and mentoring has brought me to where I am in the theater. Go see their plays any chance you get; they are of national caliber. We’re fortunate they live in our neighborhood.

Finally, it’s the actors who bring our work to life, who tell the stories, who put their talent on the line. And the directors who coax it out of them. So to Monteze Freeland, the festival coordinator; the astonishing 28 or more actors in this festival; our 4 directors; to the designers, sound, lights, costume, stage managers, all, thank you for gluing us to our seats and sending us home with a few stories we’ll mull over for a while. That’s all a playwright can ask.

Cover illustration by Brandon Jennings
Cover design and festival graphic design by Larkin Werner

THE PLAYWRIGHT

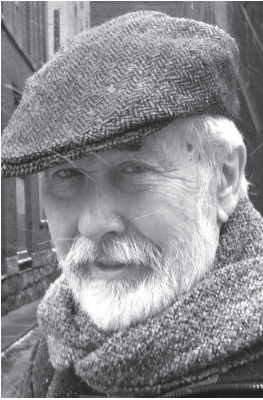


Photo by Annie O'Neill

PLAYWRIGHT | RAY WERNER graduated from Duquesne University in 1964 and studied playwriting at the Yale School of Drama. But advertising grabbed him, and he worked as a copywriter/producer and then Creative Director at a major Pittsburgh agency. Later, he started his own agency, and after a good run, sold it to pursue other writing. In 2004 he was elected to the Pittsburgh Ad Federation Hall of Fame. In 2005 they gave him their Silver Award for “furthering creativity and community service.” He still works as a writer and marketing consultant. His business card reads, “Writer, Baker, Music Maker.” Ray’s short film in 2008, *Tommy and Me*, directed by Gregory Lehane, and starring Tommy LaFite, was part of the Pittsburgh Neighborhood Narratives feature film that helped celebrate Pittsburgh’s 250th birthday. In 2015, his campaign, *You’ve Got a*

Friend in Pennsylvania, was selected as the best ad campaign in Pittsburgh’s history, by ad executives polled by The Pittsburgh Business Times Journal. Ray’s focus for the past dozen years has been playwriting. With this festival, and his play *Run the Rabbit Path* with PICT this February, he will have had 14 plays in 12 productions, and 4 staged readings, with 6 different theaters. However, the bulk of these plays have been produced by Mark Clayton Southers, who gave Ray his start. A collector of sayings, Ray’s current favorite is from the Irish country poet Paddy Kavanagh. “To be dying, is to forget about the masterpiece you will begin tomorrow.” For Ray, much of life is about beginning. If you work hard enough, sometimes you find an ending.

Bread baking is a serious hobby and Ray currently has some folks excited about community brick ovens in Pittsburgh. The first was in Braddock and the next will be at Epiphany Catholic Church for Move a Mountain Missions, coming in 2019. Ray was a participating artist in “*Gestures*” at the Pittsburgh Mattress Factory in May, 2009. His installation was *Bricks for Bread*. An amateur musician (anglo concertina), Ray is a founding member of the Irish traditional band Hooley. Also a composer, two of his songs were recorded by the late and celebrated Irish tenor Frank Patterson. His favorite collaborator is singer/composer Michael Gallagher, Pittsburgh’s esteemed Irish balladeer. He is a member of the Heinz History Center Communications Committee and a board member of Move a Mountain Missions. Ray has served on the board of several Pittsburgh non-profits, including the Ireland Institute, and was past President of PICT, of Calliope, and Chair of the St. Francis Health Foundation.

Ray and his wife Susan have four children, seven grandchildren, and live in the Point Breeze neighborhood. They’ve been active in the St. Bede Parish community for over 47 years, Susan currently on the Unity Committee and Ray in their magnificent choir.

Here's a chance for you to get in on the action. Use this page to take your "test" during *Raphael's Angels*, and get a better understanding of what it's like to have Tourette Syndrome.

Your second chance to get in on the action: tell your friends to see all the Ray Werner Festival plays, and be sure to see them all yourself! Visit pghplaywrights.org now!

ABOUT THE PLAYS

RAPHAEL'S ANGELS

by Ray Werner

Music/lyrics by Ray Werner and Michael Gallagher

A musical play in one act

Directed by Rita Gregory

RAPHAEL Joseph Fedore
TARYN Jade Langan
SISTER ROSIE Karla Payne
BISHOP DANNY Tom Kolos
CRUSHER Christian Carter
SHORTY M. Ramon Washington II
MARY Stacey Rosleck

SET DESIGN AND CONSTRUCTION Diane Melchitzky
SOUND DESIGN Mark Whitehead
LIGHTING DESIGN Piper Clement
COSTUME & MAKEUP DESIGN Cheryl El-Walker
DRAMATURG Deborah Talarico
PROPS MASTER Austin Sills
LIGHTING TECH Ashley Southers
CREW James Howard, Eric Eleam Jr.

TIME

Today. And especially, tomorrow.

SETTING

A bedroom. A classroom. A cafeteria. A hallway. The principal's office.
The high school stage and auditorium for the annual talent show.

Dedicated to the Pennsylvania Tourette Syndrome Alliance (PA-TSA) and their extraordinary efforts for a better understanding of Tourette syndrome.

The PA Tourette Syndrome Alliance is a state-wide non-profit organization that promotes awareness and acceptance, provides education, and assists families, schools and communities while advocating for individuals with TS. The services provided by PA-TSA are focused on increasing understanding of the disorder and providing proven accommodations and strategies so a child or adult diagnosed with TS can succeed.

Tourette Syndrome can be a very complex disorder and many people do not have a full understanding of these complexities. PA-TSA's programs of information, education and disability advocacy strive to promote understanding of Tourette Syndrome in order to promote acceptance of those diagnosed.

SPECIAL APPRECIATION

Abbey Road Studio and Al Snyder

ABOUT THE PLAYS

SUMISAMI

by Ray Werner

A tragedy in two acts

Directed by John Amplas

PATA PADDY David Cabot*

CLARE Nami Talbot

MOSES Wali Jamal

ALOIS Devon Burton

PATA TOM Gabe DeRose

STAGE MANAGER Hope Marie

SET DESIGN/CONSTRUCTION Diane Melchitzky

SOUND DESIGN Mark Whitehead

LIGHTING DESIGN Piper Clement

COSTUME AND MAKEUP DESIGN Cheryl El-Walker
Arionna Sherwood

PROPS MASTER Austin Sills

LIGHTING TECH Ashley Southers

CREW James Howard, Eric Eleam Jr.

Act I

September 1975, the Capuchin mission of Tari.

Act II

The day of Independence and the day after.

SETTING

The Capuchin mission, the jungle, the rainforest, the mountainous Southern Highlands of Papua New Guinea.

The Huli are a tribe of red-black-skinned Papuans who have been living in the Southern Highlands of Papua New Guinea for countless generations. The folktale of SumiSami is one of their legends. Pidgin (Tok Pisin) is interspersed throughout. It is a colorful and vibrant language cut out of the whole cloth of English, made up of English expressions. It is inventive and has a smile to it, and a captivating rhythm.

DEDICATION

SumiSami is dedicated to the late Fr. Dunstan Jones, OFM Cap., and the Capuchin Franciscans for their great work and love for the people of Papua New Guinea. Fr. Dunstan shared the Huli folktale of SumiSami to Ray and son Larkin when they visited him in PNG in 2002.

SPECIAL APPRECIATION

To Fr. John Pfannenstiel and The Seraphic Mass Assoc. for their help, their treasury of photographs, and the loan of their Capuchin habits and vestments. And to Bishop Bill Fey, Fr. Sam Driscoll, and Brother Ray Ronan for their extraordinary attention to the details of Papua New Guinea culture, and especially the spelling and diction of Tok Pisin.

*Actor appears courtesy of Actors' Equity

ABOUT THE PLAYS

OUR LADY OF DRUBBLEDUFFY

by Ray Werner

A satire in two acts

Directed by Melissa Martin

BRENDAN MCGILL	Paul Ford*
PADDY O'HARA	Bill Crean
SADIE MCGONNIGLE	Mary Harvey
JAMIE O'HARA	Jaime Slavinsky*
WILLIE MCGANLEY	Dave Mansueto
FATHER JOHNNY CONNELLY	BillyDave Wammo
FLUTE/TIN WHISTLE	Dr. Richard Withers
FIDDLE	Vincent Burns
CEILI DANCERS	Kate Guay, Barb Conner, Carmel Mulkerrin Caley Donovan, Dave Harnett, Jim Guay

STAGE MANAGER	Shanita Bivins
SET DESIGN AND CONSTRUCTION	Diane Melchitzky
SOUND DESIGN	Angela Baughman
LIGHTING DESIGN	Piper Clement
COSTUME AND MAKEUP DESIGN	Cheryl El-Walker Arionna Sherwood
PUPPETMAKER	Cheryl Capezzuti
PROPS MASTER	Austin Sills
LIGHTING TECH	Ashley Southers
CREW	James Howard, Eric Eleam Jr.

TIME

The present. Or nearly. Early afternoon.

SETTING

Paddy's Pub. A bench in the square.
And Father Johnny's study, a simple table and chair.

DEDICATION

This play is dedicated to the inimitable Sadie Lavelle and her family, whose welcoming spirit will forever lift up all who visit The Eagle Bar, Corclough, Co. Mayo, Ireland.

SPECIAL APPRECIATION

The Pittsburgh Ceili Club, who promote Irish culture in the city of Pittsburgh through music and dance. For 29 years they have invited all to join them for set and ceili dancing at the weekly Tuesday ceili at Mullaney's Harp and Fiddle or their monthly ceilis the first weekend of the month. Free Instructions at most events for anyone wanting to give it a go. More information is available at www.pittsburghceiliclub.org.

CITY THEATRE, for graciously lending us rehearsal space

*Actor appears courtesy of Actors' Equity

ABOUT THE PLAYS

THE STUTTERING PIG

by Ray Werner

A fable, a farce, in one act

Directed by R. M. Lawrence

DAN MCGINLEY Paul Guggenheimer

MICK BROWNE Greg Tomasino

JAMIE MCGRATH James Hartley

THERESE CAMPBELL Lynda Marnoni*

OLIVER CAMPBELL Mark Tamsula

TIME

The past, also the present, as they sometimes converge. Especially in a fable.

SETTING

McGinley's, a country pub in remote County Donegal, Ireland, evening.

THE CHRISTMAS TASSEL BELL

by Ray Werner

A play in one act

Directed by R. M. Lawrence

LARRY, also POP, SANTA, ISHMAEL Lamar Fields

KATIE, also ABUETTE Rachel Pfennigwerth

JACK Matthew Southers Jr.

KIMEEN Christine Marie

SETTING

A boy's bedroom, and just outside. A hospital hallway. A bed. A chair. A cave. And places in our imagination.

FOR BOTH OF THE ABOVE PLAYS

STAGE MANAGER Ashley Southers

SCENIC DESIGN/CONSTRUCTION Diane Melchitzky

SOUND DESIGN Angela Baughman

LIGHTING DESIGN Piper Clement

PROPS MASTER Austin Sills

LIGHTING TECH Ashley Southers

CREW James Howard, Eric Earl Eleam Jr.

*Actor appears courtesy of Actors' Equity

THE CAST



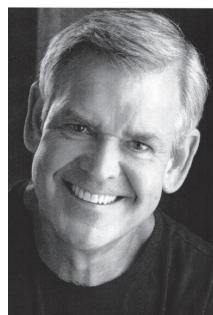
Devon Burton
SumiSami



David Cabot*
SumiSami



Christian Carter
Raphael's Angels



Bill Crean
Our Lady of Drubbleduffy



Gabe DeRose
SumiSami



Joseph Fedore
Raphael's Angels



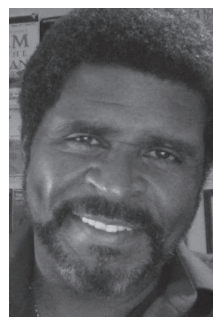
Paul Ford*
Our Lady of Drubbleduffy



Paul Guggenheimer
The Stuttering Pig



James Hartley
The Stuttering Pig



Wali Jamal
SumiSami



Tom Kolos
Raphael's Angels



Jade Langan
Raphael's Angels

*Actor appears courtesy of Actors' Equity

THE CAST



Lynda Marnoni*
The Stuttering Pig



Karla Payne
Raphael's Angels



Rachel Pfennigwerth
The Christmas Tassel Bell



Stacey Rosleck
Raphael's Angels



Jaime Slavinsky*
Our Lady of Drubbleduffy



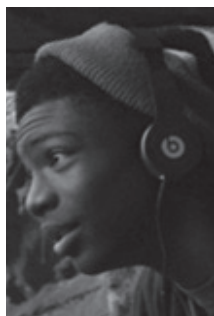
Matthew Southers Jr.
The Christmas Tassel Bell



Nami Talbot
SumiSami



Mark Tamsula
The Stuttering Pig



M. Ramon Washington II
Raphael's Angels

Not pictured:

- Mary Harvey
- Lamar Fields
- Dave Mansueto
- Christine Marie
- Greg Tomasino
- BillyDave Wammo

Visit pghplaywrights.org/rayfest for more bios and headshots.

*Actor appears courtesy of Actors' Equity

DIRECTOR | JOHN AMPLAS has enjoyed a life in theatre and film for the last fifty years as an actor/director and teacher. John recently retired from his beloved Pittsburgh Playhouse after 36 years. His film work includes a friendship and working relationship with the late George A. Romero, having starred and featured in six of George's films. Co-founder of the Bill Nunn Project and director of the Pittsburgh August Wilson High School Monologue Competition. John thanks the Pittsburgh Playwrights and playwright Ray Werner for the opportunity to direct *SumiSami*.

SOUND DESIGNER | ANGELA BAUGHMAN is thrilled to be joining Pittsburgh Playwrights for the first time. Her most recent sound design and engineering credits include Afro Yaqui Music Collective's *Migrant Liberation Movement Suite*, Prime Stage's *Of Mice and Men* and City Theatre's Young Playwrights Festival. She worked on John Petrucelli's newly released live jazz album *Presence*. She also designed radio installations for Montez Press at Mathew Gallery NYC and MoMA PS1. She works with a variety of artists and theater companies, specializing in Foley sound effects, live mixing, and soundscapes that blur the lines between music and noise. Angela made her way to Pittsburgh after earning a degree in music production and engineering from Berklee College of Music. You can visit her online at thatsoundgirl.com.

ALOIS | DEVON BURTON

STAGE MANAGER | SHANITA BIVINS has previously stage managed for Pittsburgh Playwrights, including three August Wilson plays, *Ma Rainey's Black Bottom*, *Seven Guitars* and *King Hedley II*. Shanita is Pittsburgh born and raised, and grew up on the Northside. After spending the last 3 years on and behind the stage, she has learned so much and gained much-appreciated experience. Following this production, she will be continuing her passions of acting, producing, and stage managing.

PATA PADDY | DAVID CABOT *

PUPPETMAKER | CHERYL CAPEZZUTI is an artist, educator and puppetmaker best known for the First Night Pittsburgh Parade, which features hundreds of community-made giant puppets dancing in the streets on New Year's Eve. All of her parade puppets are available to lend free of charge for community events and celebrations through her project Puppets for Pittsburgh at the Braddock Carnegie Library. She does commissioned works, workshops and training for puppeteers both locally and nationally and is also a faculty member at Falk Lab School at the University of Pittsburgh. www.studiocapezzuti.com.

CRUSHER | CHRISTIAN CARTER

BIOGRAPHIES

LIGHTING DESIGNER | PIPER CLEMENT is a recent graduate of Point Park University's Conservatory of Performing Arts. Select credits include: *The Scottsboro Boys* (The REP), Point Park Connections (The Conservatory Dance Company), *In The Heat Of The Night* (Pittsburgh Playwrights), *Shrek Jr.*, *Annie Jr.* (JCC of Greater Pittsburgh), *The Missing Piece* (Shana Simmons Dance Co.), and *The Forest of Everywhere*, *Midnight Radio: Frankenstein* (Bricolage).

PADDY O'HARA | BILL CREAN returns to Pittsburgh Playwrights Theatre having performed in another play by Ray Werner called *Christmas Star*, and in the Theater Festival in Black and White where he was voted best actor and audience favorite. Bill has appeared in many local theater productions, most recently in *Grey Gardens* (Major) at the Hazlett with Front Porch Theatricals and *The Cemetery Club* (Sam) at South Park Theatre. Working with Melissa and the cast has been "a whale of a time!" Enjoy the show! Slainte!

PATA TOM | GABE DEROSE

COSTUME & MAKEUP DESIGN | CHERYL EL-WALKER (a Pittsburgh native) is an award-winning costume design and make-up artist who is also a veteran stage actor/director. Her work has been seen in all ten of August Wilson's plays, completing the American Century Cycle with *King Hedley II*. Her talents have received seven Onyx Awards from the African American Council of the Arts, a Best Director award from the Theatre Festival in Black in White, and the Legacy Award from Pittsburgh Playwrights Theatre Company. Her most recent performance was in *East Texas Hot Links* in the role of Charlesetta, followed by costume and makeup design for *In The Heat of The Night*, *King Hedley II*, and *Ma Rainey's Black Bottom*.

RAPHAEL | JOSEPH FEDORE is a graduate of the Lincoln Park Performing Arts Charter School. This is his debut performance with Pittsburgh Playwrights Theater Company and he hopes that this is just the beginning of what many believe will be a successful career in the Performing Arts.

LARRY/POP/SANTA/ISHMAEL | LAMAR FIELDS

BRENDAN MCGILL | PAUL FORD*

FESTIVAL DIRECTOR | MONTEZE FREELAND has worked with PPTCO since 2013. He's managed the productions of *Hercules Didn't Wade in the Water*, *Lights Out*, *Findings*, *Seven Guitars*, *Dulcy*, *The Piano Lesson* and *Ma Rainey's Black Bottom*. In 2015 he organized the Theatre Festival in Black & White and returned as Assistant to the Director of the festival in 2016. In 2017, he directed *Miss Julie*, *Clarissa and John* at PPTCO, at the National Black Theatre Festival, and at the 2017 Festival Fringe. He is an accomplished actor and was named 2017 Performer of the Year by the Pittsburgh Post Gazette. "As always, it's a pleasure to watch the artists create through their talents."

BIOGRAPHIES

COMPOSER/LYRICIST | MICHAEL GALLAGHER is Pittsburgh's best known, best loved Irish Balladeer and this year received the very first Lifetime Achievement Award from the Pittsburgh Irish Festival. Mike has recorded several CD's and has performed at Pittsburgh's finest venues, with the best of Pittsburgh and for countless benefits. He has opened for Solas, played with the Shake Russell Trio and toured with the great Andy Stewart. His spirit and joy breathe life into his compositions and have inspired some of Ray Werner's words, including *Christmas Star* and *Raphael's Angels*.

DIRECTOR | RITA GREGORY has been a member of the performing arts community for more than 30 years. Some of her stage credits include, *Seven Guitars*, *Flying West* and most notably *Fences*. She can be spotted on several commercials for Giant Eagle, The Pennsylvania Lottery and Highmark Blue Cross Blue Shield. Film and Television credits include, *Mindhunter*, *Abduction*, *Those Who Kill*, *Three Rivers* and *Cleveland Abduction*. She's a former middle school musical theater director and is honored to serve as director for the production of *Raphael's Angels*. Thank you Mark and Monteze for this opportunity to work with a fantastic cast on the stage of Pittsburgh Playwrights Theater Company.

SADIE MCGONNIGLE | MARY HARVEY is happy to return to the stage after a hiatus. She has acted in Boston and Chicago, where she was a founding member of the Griffin Theater Company, and in Cork, Ireland, at the Everyman Palace Theatre, and in Pittsburgh at various venues. She is a dual citizen of the United States and Ireland and has had the good fortune to have lived in the Emerald Isle for a few years on and off. Mary has eight children and is expecting her ninth and tenth grandchildren before the year is out.

DAN MCGINLEY | PAUL GUGGENHEIMER is a veteran actor from Pittsburgh who appeared most recently as the policeman in *Ma Rainey's Black Bottom* at PPTCO. He was the narrator in *The Homestead Strike of 1892*, a one act play by Mark Clayton Southers, produced in September 2017. Additional credits include Professor Nemur in *Flowers for Algernon* (Butler Little Theatre); Horace Gilmer in *To Kill A Mockingbird* (Prime Stage Theatre) and Atticus Finch in the same play (Heritage Players); O'Brien in *1984* and Dr. Richard Pierson/Orson Welles in *The War of the Worlds* (Bricolage). Paul's film credits include the post-apocalyptic sci-fi movie *Dust of War* starring Doug Jones, available at Walmart and on Amazon Instant Video and other online platforms.

JAMIE MCGRATH | JAMES HARTLEY is proud to be making his Pittsburgh Playwrights debut in *The Stuttering Pig*. Previous credits include Philip in *The Lion In Winter* (Little Lake Theater), Brick in *Cat On a Hot Tin Roof* (Gilbert Theater), Lewis in *Pippin* (Theatre Factory), and Tom Sawyer in *Big River* (The Strand Theater). He would like to thank Robyne for her guidance and his mom for her constant support.

BIOGRAPHIES

MOSES | WALI JAMAL most recently portrayed Toledo in PPTCO's *Ma Rainey's Black Bottom*, and August Wilson himself in Mr. Wilson's autobiographical solo show *How I Learned What I Learned*, making him the only actor in the world to appear in all eleven of August Wilson's plays! A long-time favorite of PPTCO audiences, his roles in our productions of August Wilson's plays include: both Boy Willie and Avery in our two productions of *The Piano Lesson*, Hedley in *Seven Guitars* (twice!), Wolf in *Two Trains Running*, Bono in *Fences*, Doub in *Jitney*, Caesar in *Gem of the Ocean*, Toledo in *Ma Rainey's Black Bottom* (twice), Sterling in *Radio Golf*, Seth Holly in *Joe Turner's Come and Gone*, and Elmore in *King Hedley II*. A prolific Pittsburgh actor, he has worked with just about every theatre company in Pittsburgh, including the Public, City, Bricolage, and barebones.

BISHOP DANNY | TOM KOLOS is a veteran of the theater having performed in several theatre productions. A sampling of his productions include: *Young Frankenstein*, *Who's Afraid of Virginia Wolf*, *Angels in America Parts 1 and 2*, *The Little Mermaid*, *Romeo and Juliet* and *The Legend of Sleepy Hollow*. He has also appeared in several film, television and commercial projects. A graduate of Point Park University Conservatory of Performing Arts, Tom is honored to be a member of the cast in *Raphael's Angels*.

TARYN | JADE LANGAN is an 18 year old graduate of Lincoln Park Performing Arts Charter School. She is currently studying at CCAC, but hopes to transfer into a BFA acting program at a university next year. She was a national finalist in the August Wilson Monologue Competition in which she was mentored by professionals Malik Yoba, Kenny Leon, Joshua Jackson, Lauren Ridloff and Russell Hornsby. Recently she performed in the production of *Ragtime* at the Lincoln Park Arts Center, portraying a member of the Harlem Ensemble, a Haitian immigrant and Sarah's understudy.

DIRECTOR | R. M. LAWRENCE'S credits include Joe Popp's *Maxwell: The Rock Musical* (Jobsite Theater; Galapagos Art Space) and *Avant-Bard* (Acrosstown Repertory Theatre). Known onstage as "ranney," he is a veteran comedian and award-winning actor. He will be Troy Maxson in Cincinnati Shakespeare's 2019 production of August Wilson's *Fences*. www.itstranney.com.

WILLIE MCGANLEY | DAVE MANSUETO is a Pittsburgh-based artist and entrepreneur. He recently appeared in *Rules of Seconds* and previously in *American Falls* and *One Flew Over the Cuckoo's Nest* with Barebones Productions. Dave has appeared as one half of the improv duo Karel Mansueto, in the rap musical *Pittsburgh Batman* and often works in the world of podcasting.

KIMEEN | CHRISTINE MARIE

THERESE CAMPBELL | LYNDA MARNONI*

BIOGRAPHIES

DIRECTOR | MELISSA MARTIN is an award-winning producer/writer/director of independent film. Her film *The Bread, My Sweet*, a film festival award winner, was released theatrically, and on Showtime, Starz, and The Sundance Channel. *Dog Bytes*, a web series, has screened at festivals including Berlin, LAWEBFEST and MIPTV Cannes among others. *Summerlings*, a feature film which Martin is producing and directing, is in development. Martin has directed multiple plays for barebones productions: this year, *Rules of Seconds* and *Lobby Hero*. This is her long-overdue first time working with Pittsburgh Playwrights. She is grateful to Ray Werner and the entire cast and crew for the opportunity to bring *Our Lady of Drubbleduffy* to the stage—she's a beauty, she is.

SCENIC DESIGNER, TECHNICAL DIRECTOR, SET CONSTRUCTION, SCENIC PAINTER | DIANE MELCHITZKY has designed and built Pittsburgh Playwrights sets since our 2003 debut. She recently worked as a carpenter on the movie *Fences* directed by Denzel Washington. Most recent projects include set design for PPTCO'S *Ma Rainey's Black Bottom*. the Gateway High School and various exhibits at the Clemente Museum and the August Wilson Center.

SISTER ROSIE | KARLA PAYNE is a stage actor, poet and singer, who has appeared in countless productions, including New Horizons' *Lotto: Experience the Dream*, *The Dance on Widows Row* and *Queens of the Blues*. Musical productions include *The Wiz*, *Little Shop of Horrors*, *Into the Woods* and several performances of *Black Nativity*, produced annually by the Shona Sharif Drum and Dance Ensemble. Recently Karla appeared as Tanya in *King Hedley II* for PPTCO, performing it at the childhood home of Mr. Wilson. Writing under the pen-name Spirit-Lead, this accomplished spoken word artist has released two spoken word CDs, the award winning *Words Unspoken* and *Relatively Speaking*. She also released a poetry chapbook entitled, *From My Indigo Pen*. "To whom much is given, much is required." - Luke 12:48.

KATIE/ABUETTE | RACHEL PFENNIGWERTH

MARY | STACEY ROSLECK is thrilled to make her Pittsburgh Playwrights Theatre debut. She has performed with numerous Pittsburgh area companies and festivals including Little Lake, Prime Stage, Throughline, Stage 62, South Park, Pittsburgh New Works Festival and Stage Right. Her favorite roles include Kate Keller in *The Miracle Worker*, Charlie's Mom in *The Perks of Being a Wallflower*, Lady Croom in *Arcadia*, and Mrs. Halbestadt/ Maria Waller in *Judgment at Nuremberg*. Love and thanks to hubby Chris for his constant support and encouragement!

BIOGRAPHIES

ASSISTANT MAKEUP/COSTUME DESIGN | ARIONA SHERWOOD is a native Pittsburgher who holds a degree in Business Administration. In addition to her work in makeup and costumes, she has stage managed and been a sound technician, and her world revolves around writing every day. She is a self-published author, with her book *Thirty Days of Manifesting*. She has two little boys Ameer and Niyeer. Her production credits include *Miss Julie*, *Clarissa*, and *John*; *Jitney*; *Fences*; *Seven Guitars*; *King Hedley II*; and the 2016 Theater Festival in Black and White. She also holds an honorable mention in 2018's Writer's Digest magazine for her writing. This show is dedicated to all her family, and friends that have become like family, who believe in her and her journey toward becoming a phenomenal woman, but most importantly, to God she gives all the glory, thanks, and praise.

JAMIE O'HARA | JAIME SLAVINSKY* is thrilled to return to Pittsburgh Playwrights & to be reunited with director Melissa Martin. Favorite credits include: *A Streetcar Named Desire* (Barebones Productions), *A Soldier's Heart* (Playhouse REP), *The Man in the Window* (Payan Theatre NYC), *Apple Says Yes* (PPTCO, Best Actress Winner), and *Dead Man's Cell Phone* (Organic Theater Pittsburgh, Post Gazette Lead Actress nomination). Jaime is Founder & Artistic Director of Organic Theater Pittsburgh & Momentum Actors' Studio as well as a teaching artist at Donna Belajac Casting & a private acting and audition coach. She is a graduate of the Atlantic Acting School in NYC & the Conservatory of Performing Arts at Point Park University. Proud member of SAG-AFTRA & Actors' Equity Association.

STAGE MANAGER, LIGHTING TECHNICIAN, D.I.A.P. | ASHLEY SOUTHERS is a D.I.A.P. (Do-it-all-person) in training at the Pittsburgh Playwrights Theatre Company. She has worked in the box office, as a lighting tech, costume assistant, house manager, stage manager, assistant stage manager as well as directed for the Theatre Festival in Black & White. She is currently a Senior at Point Park University majoring in creative writing.

JACK | MATTHEW SOUTHERS JR. An eager kid from Pittsburgh, PA who recently finished his first principal role in Netflix's *Mindhunter* Season 2. He's currently honing his craft with a series of weekly acting and dancing classes.

DRAMATURG - RAPHAEL'S ANGELS | DEBORAH TALARICO is delighted to work with playwright Ray Werner on his seminal play *Raphael's Angels*. After teaching English and Performing Arts for 35 years for the Woodland Hills School District, she knows first-hand the subjects of the play: bullying, intolerance, and the aftereffects of abuse. She is excited to see the play come alive, engage the audience, and create insight into the experiences of children who have Tourette Syndrome.

OLIVER | MARK TAMSULA has been performing and teaching in the Southwestern Pennsylvania region for over 30 years. He plays and teaches fiddle, banjo, guitar and mandolin, drawing from an ever-expanding repertoire of tunes and songs. In addition to performing and recording the music of Southwestern Pennsylvania, Mark also performs with the bands Lackawanna Longnecks (old time) and Grand Bon Rien (Cajun). www.appalachianmusic.net

BIOGRAPHIES

SOUND DESIGNER | MARK WHITEHEAD is the founder of Saints & Poets Theater, for which he produced and directed the world premiere of Christiane D's *Saffronia*, and the local premieres of Sam Shepard's *The Late Henry Moss* and Donald Freed's *Secret Honor: The Last Testament of Richard M. Nixon*. Other directing credits include *4-H Club*, *Insignificance*, *Comfort Zone*, *The Revenants*, *Cry Havoc*, *Taking Sides*, and *Fool for Love*. Mark has served as Resident Sound Designer for The Unseam'd Shakespeare Company, The Jewish Theatre of Pittsburgh and currently PPTCO. Mark's sound traveled to the 2017 Edinburgh Festival Fringe in PPTCO's production of *Miss Julie*, *Clarissa and John*. Mark was a founding producer of The Dark Night Cabaret performance series and has produced and directed music videos for several local bands. He recently portrayed Sturdivant in PPTCO's *Ma Rainey's Black Bottom*, as well as designing sound for the show.

MICK BROWNE | GREG TOMASINO

FATHER JOHNNY CONNELLY | BILLYDAVE WAMMO

SHORTY | M RAMON WASHINGTON II

Please consider a financial contribution to Pittsburgh Playwrights Theatre Co.

DONORS - January 1, 2017 through November 4, 2018

Barbara Abramovitz	Donnella Drewery	Stephanie Lonsinger	Joni Rabinowitz	Michele Sweeney
Andrew Ade	Está Ehrmann	Christopher Mark &	Barbara J Rainard	Celeste Taylor
LL Altes	Howard Elson	Mary Denison	Michael Ramsay	NaTasha Thompson
Teresa M Augello	Marvin Fein	Marc Matthews	Lillian Reese-McGhee	Gary & Debbie Truitt
Shirley Biggs	Bryan Fischer	Randolph Matuscak	Daniel Resnick	Aaron Washington
Richard Chesnik	Mark Freeman	David Maxwell	Jo Riley	Cindy Webreck
Cornelius Clancy	Laurence Glasco	Michele McClendon	Jan & Doug Ripper	Eileen Weiner
Rosemary K Coffey	Jessie Goodman	Susan McGregor-Laine	Barbara Russell	Bob and Arlene
Margaret Collins	Leon and Ann Haley	Christy L. McGuire	Mary Russell	Weiner
Patrick W. Conner	Joanne Hallock	Kenneth McCrory	Karen Scansaroli	Ray Werner
George Constantin	Charlet Holley	Rachel Meyers	Sharon Simpson	Peggy Whitehurst
Peter Cooke	Sherdina Jones	Mary Morton	Christine Smith	Tiffany Wilhelm
David Crawford	Chris Josephs	Mary Moses	W Henry Snyder	Edwin Woll
Thomas Dean	Janet Kafka	Jonathan Nadle	Robert Squires	Eileen/Kipp
Craig Dinham	Richard Kenzie	Katherine Nelson	Judith Starr	Yacknin/Dawson
Steven Doerfler	John Krolkowski	Hannah Nielsen-Jones	Aleta Staton	John Yarbrough
June Pickett Dowdy	Derrell Lawrence	Mel Packer	Jane Steineck	Rita M. Yeasted
Michael Downing	Hazel Leroy	Charmaine Page	Irene Surmik	
Jeanne Drennan	David Longstreet	Robert Racza	Carol Sutton	

Make your tax-deductible contribution by check to Pittsburgh Playwrights Theatre Company, 3515 Iowa Street, Pittsburgh, PA 15219 or by visiting our website <https://www.pghplaywrights.org/donations/>

SPONSORS & THANK YOUS

THE HEINZ ENDOWMENTS

Howard Heinz Endowment • Vira I. Heinz Endowment

Advancing Black Arts in Pittsburgh



SPECIAL THANKS

Maura Krushinski and THE IRISH DESIGN CENTER for help with Irish clothing and props

Pittsburgh Playwrights Staff & Board

ARTISTIC & EXECUTIVE DIRECTOR	Mark Clayton Southers
ARTISTIC ASSOCIATE	Monteze Freeland
WEBSITE MANAGER & PROOFREADER	Steven Doerfler
PUBLIC RELATIONS	C. Denise Johnson
BOX OFFICE MANAGER	Erin Taylor
CONCESSIONS	Marcus Carl Southers, Andre J.C. Southers
GRAPHIC DESIGN	Eric A. Donaldson
PROGRAM DESIGN/EDITING	Michelle Belan
DO-IT-ALL-PERSON (DIAP)	Ashley Southers
CREW	James Howard, Eric Earl Eleam Jr.
BOARD PRESIDENT	Dr. Michael Ramsay
BOARD TREASURER	Elizabeth Reiss
BOARD SECRETARY	Lorille "Neicy" Readie

BOARD MEMBERS

Don Bell ★ Janis Burley Wilson ★ Donna Drewery
Tawnya Farris-Redwood ★ Mark A. Freeman ★ Lynne Hayes-Freeland
Carlton Heywood ★ Nikki Jackson ★ Susan McGregor-Laine ★ Elizabeth Reiss
Ryan Scott ★ Eric A. Smith ★ Delores Southers

Pittsburgh's own Michael Kooman &
Christopher Dimond—the award-winning songwriting
duo behind *Dani Girl*, Disney's *Vampirina*, and
Judge Jackie Justice—come home for the holidays.

A HOLIDAY HOMECOMING!

featuring the music of
KOOMAN & DIMOND



TWO NIGHTS ONLY!

**NOVEMBER 30
& DECEMBER 1**

Opening Act Performances
by Musical Theatre Artists of
Pittsburgh and seniors from
CMU School of Drama

**CITY
THE
ATRE**
events

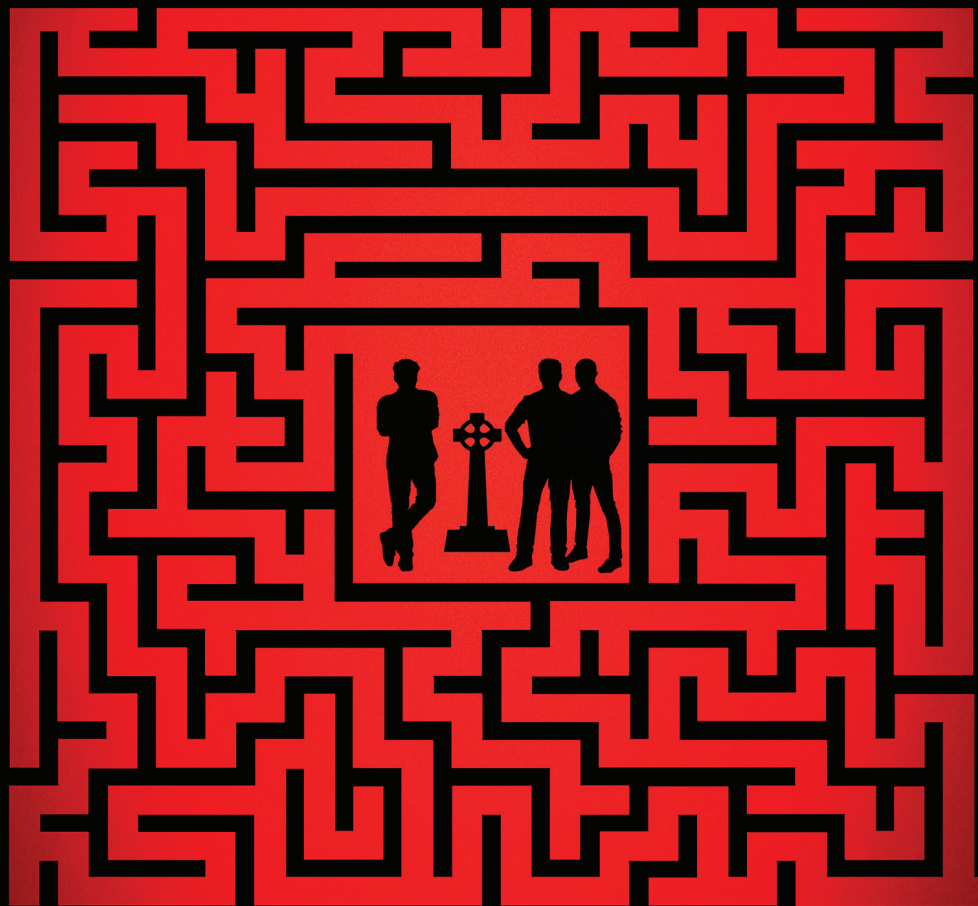
TICKETS ON SALE NOW

PH# 412-431-CITY (2489)

WEB CITYTHEATRECOMPANY.ORG

OR VISIT THE BOX OFFICE

Run the Rabbit Path



BY RAY WERNER

A
WORLD PREMIERE
PRESENTED BY

PICT
classic theatre

JANUARY 31
THROUGH
FEBRUARY 16, 2019

AT WQED'S FRED ROGERS STUDIO IN OAKLAND

TICKETS ON SALE NOW: PICTTHEATRE.ORG 412-561-6000

USE CODE **RWPF** FOR 20% OFF ADULT TICKETS TO ANY PICT
PERFORMANCE, NOW THROUGH FEB 16, 2019.